

## Product warranty

Thank you for purchasing our products. In the spirit of being responsible to you and in order to ensure our quality after-sales service, we hereby make the following instructions for the warranty of our products:

1. In case of product failure, the warranty service shall be provided to the local designated service center with the product warranty certificate and product purchase certificate.
2. The free warranty period is two years (from the date of purchase).
3. The logistics cost of the repair products shall be borne by the customer.
4. The following situations will result in warranty failure or not within the scope of after-sales service commitment, and only paid after-sales service can be provided:
  - A. Beyond the warranty period.
  - B. Products not sold through the legal distribution channels authorized by the company.
  - C. Failure caused by the user's improper use or failure to use the product in accordance with the instructions in the product instructions!
  - D. Disassemble the product without permission, causing damage to the outer shell and internal circuit (human factors).
  - E. Failure caused by accidental or irresistible disasters (such as fire, flood, earthquake, lightning strike, etc.).

Please refer to relevant laws and regulations for any matters or disputes arising from the above clauses. Our company has the right to modify and finally explain these provisions.

1. Please do not install the transmitter on metal objects (such as iron doors, iron door frames) to avoid affecting the wireless remote control distance.
2. The actual remote control distance varies depending on the environmental factors used. When the receiver of the doorbell does not ring, check if the receiver is powered normally.
3. Multiple transmitter and different ringtone settings:  
Connect the receiver to the power supply. After selecting the ringtone, press and hold the volume button for about 4 seconds. The indicator lights up to enter the learning state. At this time, press the transmitter, the receiver flashes and rings, and the pairing is successful.
4. Freely match the transmitter and receiver settings:  
Connect the receiver to the power supply, press and hold the volume button for about 4 seconds, the indicator lights up to enter the learning state. At this time, press the transmitter, the receiver flashes and rings, and the pairing is successful.

## Receiver parameter

Category	Parameter	Note
Power consumption	< 0.1W	
Power supply	AC110V/220V	
Decoding way	Microprocessor	There is a preventive action
Coding scheme	Digital coding	
Music configuration	60 fi music	
Receiving distance	150m	Open space
Learning code pairing	Free combination	



fashion design



Touch the button



60 music



Wireless remote control

## Certificate of approval

This product passes the inspection and is allowed to leave the factory.

Inspection date:

Inspector: check01

## SELF POWERED WIRELESS DOORBELL

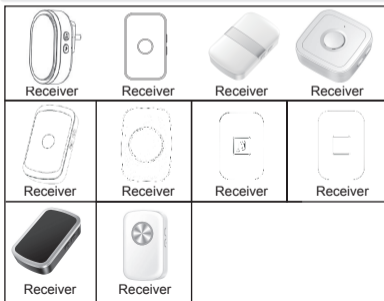
### Product description

FA series

## Product introduction

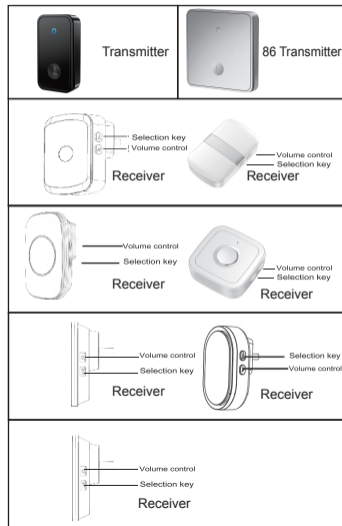
- 1.Beautiful appearance and fashion.The product is in line with green environment protection,low carbon and low power consumption.
- 2.The digital doorbell transmitter and receiver adopt the same frequency and different code technology to avoid external interference.
- 3.The distance of remote control in the open area reaches 150 meters,which is applicable to all kinds of home,office,hotel, factory,travel and other environments.
- 4.The transmitter has waterproof and dustproof function,which conforms to IP44 standard.

## Product list



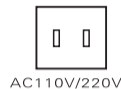
Product models include: FA12 FA30 FA50 FA58 FA78 FA86 FA88 FA96 FA99 FA28 FA29

## Key function introduction



## Installation methods and procedures

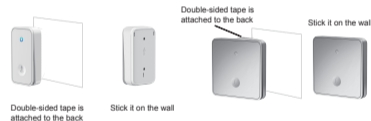
- 1,The receiver directly into the power socket to get electricity.



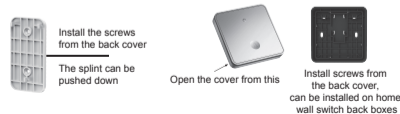
The receiver

- 2,Transmitter(two installation methods)

- A. Adhesive-attach the two-sided adhesive to the bottom of the launcher and then attach the bottom shell to the wall



- B. Screw fixing-----fix the bottom case to the wall with mounting screws



It can be fixed to the wall with double-sided tape, or it can be fixed to the wall with two screws.

## Product warranty certificate

User name: \_\_\_\_\_

Contact: \_\_\_\_\_

Product model: \_\_\_\_\_

Store name: \_\_\_\_\_

Purchase address: \_\_\_\_\_

Document number: \_\_\_\_\_

Date of purchase: \_\_\_\_\_

Failure instructions: \_\_\_\_\_

