

Instruction Manual

ROTARY DIMMER for LED

DS9L BMS9L

For 2 - wire instalation

KONTAKT SIMON

43-500 Czechowice-Dziedzice,
ul. Bestwińska 21
POLAND
tel. +48 32 324 63 00
fax. +48 32 215 35 55
www.kontakt-simon.com.pl
e-mail: info@kontakt-simon.com.pl

M174v00

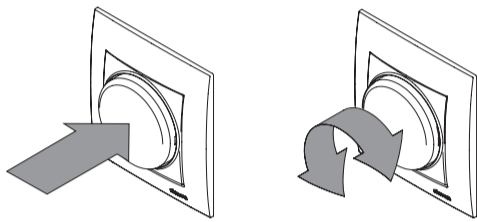


NOTE:

Read this instruction carefully!
Before mounting the device disconnect the home electrical system fuses. Only a qualified technician should mount the device.

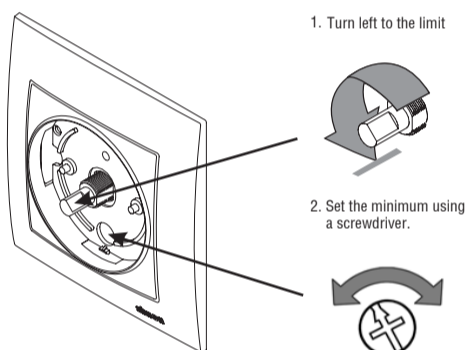
APPLICATION

The dimmer is designed for switching ON/OFF the light and the light intensity adjustment in apartments, offices, shops etc. In order to switch ON/OFF the light it is necessary to push the knob. The light intensity is being adjusted by rotating the knob. In order to increase the light intensity it is necessary to turn the knob right (clockwise).



The dimmer may be applied in the two-way and intermediate installations.

In order to set the initial level of illumination (or eliminate any flickering of LEDs), proceed as in the figure below.



LIGHT SOURCES

	dimnable LED lighting	2 ÷ 250W
	230 V incandescent lamps	15 ÷ 250W
	230 V halogen lamps	5 ÷ 250W
	non-dimmable LED lighting	
	Energy-save lighting	
	Fluorescent lamps	



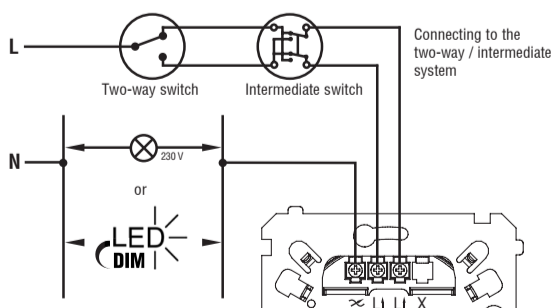
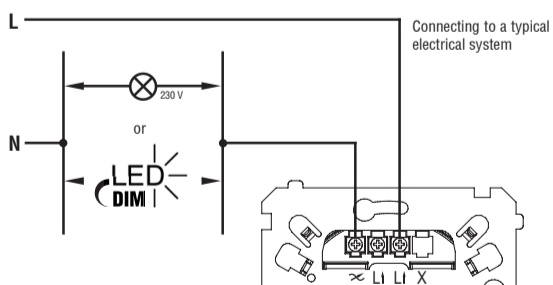
WARNING: The dimmer is not designed for interoperation with the core type toroidal or column transformers, fans and other devices fitted with an electric motor. Do not keeping this rule may cause the dimmer failure.

SHORT CIRCUIT PROTECTION

The dimmer is fitted with the short circuit protection that switches the load (lighting) OFF when the load current exceeds 20 A. After the short circuit cause removal it is possible to switch the dimmer ON again.

In case of burnout of 230 V light bulb the load current may reach the limit value what will cause the lighting switching OFF and prevent the bulb from complete burnout. **When the automatic switching OFF repeats over and over again it is necessary to check the bulb state and replace it if needed.**

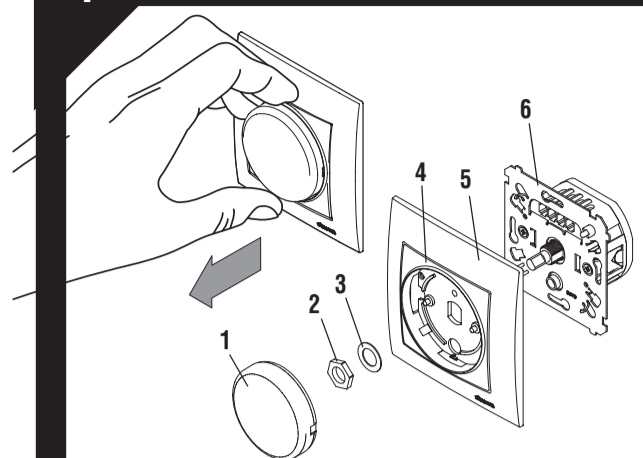
CONNECTING THE DIMMER TO THE ELECTRICAL SYSTEM



TECHNICAL DATA

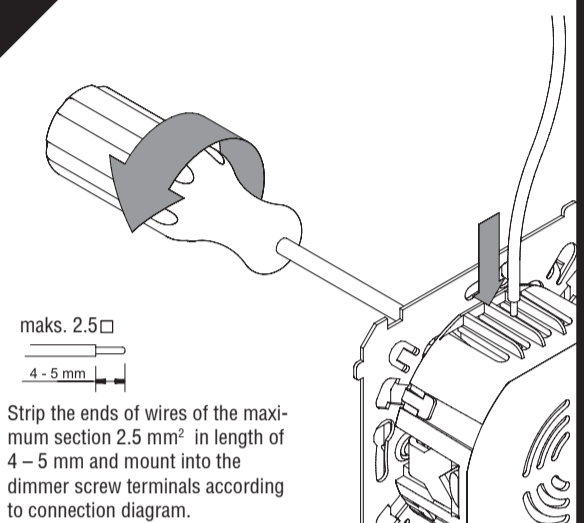
Operating voltage	230V / 50Hz
Load range:	2 ÷ 250W
Type of load	incandescent/halogen load 230V, dimmable LED lighting
Interference level	according to PN-EN-55015
Degree of protection	IP20
Operating mode	continuous
Adjustment mode	smooth
Weight	100g

1 Mounting in a single junction box



Remove knob /1/, unscrew nut /2/ fixing the cover, remove washer /3/ and frame /5/ with the cover /4/ from operating unit /6/.

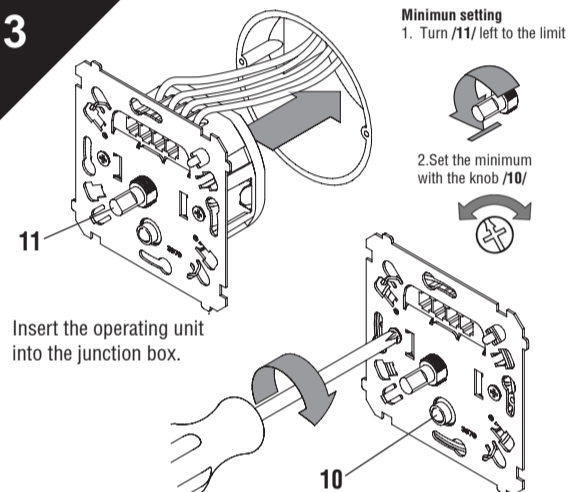
2



maks. 2.5mm
4 - 5 mm

Strip the ends of wires of the maximum section 2.5 mm² in length of 4 - 5 mm and mount into the dimmer screw terminals according to connection diagram.

3

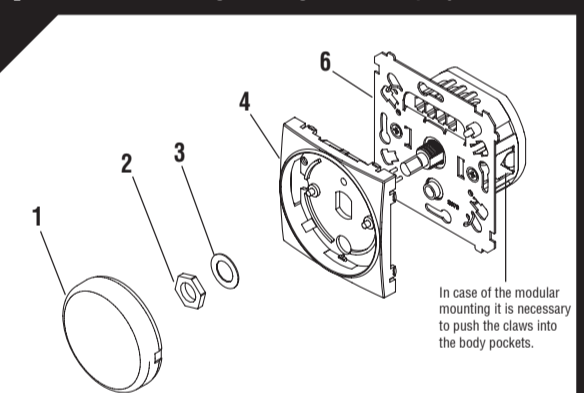


Minimum setting
1. Turn /11/ left to the limit
2. Set the minimum with the knob /10/

Insert the operating unit into the junction box.

Tighten up the hooks with screws, put the frame onto the operating set, cover, and washer, and cover the set with the cover. Check the range of adjustment, and - if necessary - set the minimum with the knob /10/. Then, fix the knob /1/ in its place.

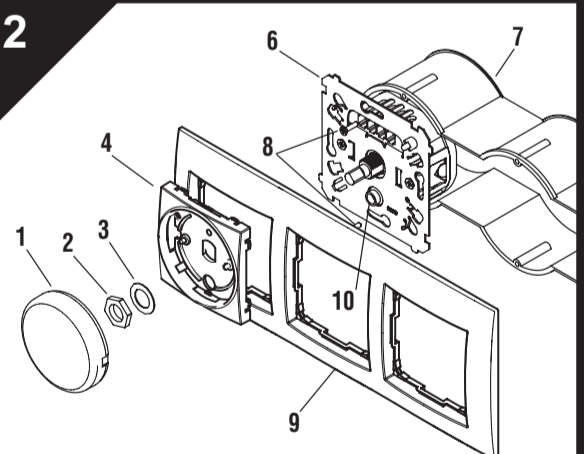
1 Modular mounting in a single and multiple junction box



In case of the modular mounting it is necessary to push the claws into the body pockets.

Remove knob /1/, unscrew nut /2/ fixing the cover, remove washer /3/ and cover /4/. Strip and mount the wire ends into operating unit /6/ screw terminals as in case of the mounting into the single junction box (Fig. 2 above).

2



Insert operating unit /6/ into junction box /7/ and screw it with the use of screws /8/ provided with the junction box. Put frame /9/, cover /4/, washer /3/ on the mounted operating unit, and screw all the parts with the use of nut /2/. Then put on knob /1/.